



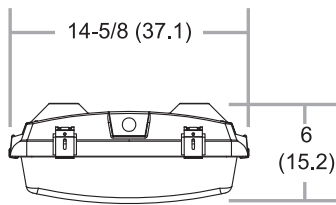
GPF Series



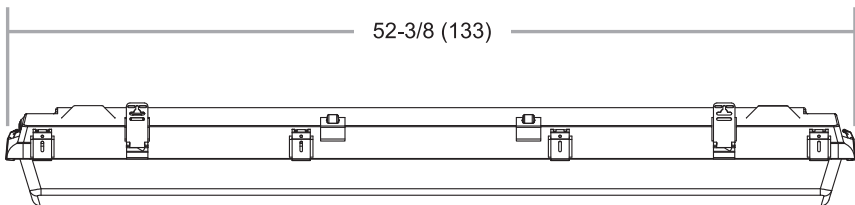
Description

The **GPF (General Purpose Fluorescent) Series** is a rugged non-metallic fluorescent luminaire specifically designed as an alternative, energy saving solution to replace most 250 thru 400 watt metal halide fixtures. The GPF is ideal for food processing facilities, cold storage plants, dairies, bottling facilities and any industrial environment where water spray, humidity, dust or corrosive chemicals are present.

Dimensions



END VIEW



SIDE VIEW

Date	Catalog #
Type	Project
Prepared by	Comments

Features and Specifications

ENCLOSURE

Fiberglass reinforced polyester housing is UL 94 and UL 746 5VA flammability rated. Built in heat management system allows fixture to operate in high ambient environments. Poured-in-place continuous closed cell gasket provided a seamless seal for lens.

LENS

Impact resistant, UV stabilized acrylic lens with clear or frosted face and frosted ends to reduce direct glare. Held tightly in place by twelve (12) plastic or stainless steel latches to assure a positive seal and lens retention.

GEAR TRAY

Secured in place by four (4) internal stainless steel clips, the painted 22 gauge metal gear tray can be opened from either side for quick and easy maintenance. Internal mirror reflectors are optional.

ELECTRICAL

Thermally protected Class P electronic ballast and rotor lock lampholders rated for wattage and voltage standard. Fixture supplied with 1/2" NTP entries in each end. Available with optional 6' lead or 3 or 4 wire mini-male receptacle.

MOUNTING

Fixture can be mounted by suspension cables systems, "V" hooks or rigid mounted using the optional beam mounting bracket. All hardware is available in zinc plated or stainless steel.

CERTIFICATIONS

ETL for Wet Location, NSF, IP65, IP67, NEMA 4X and high pressure tested at 1500 PSI.

Ordering Information

Example Catalog Number – GPF-454-U-XXX

GPF	-	6	-	54	-	U	-	XXX
A		B		C		D		E
Series		Lamps		Wattage		Voltage		(Options)
<input type="text"/>	-	<input type="text"/>	-	<input type="text"/>	-	<input type="text"/>	-	<input type="text"/>

Catalog Logic:

A. Series

GPF = General Purpose Fluorescent

B. Lamps

4
6

C. Wattage

32 = 32 watt T8
54 = 54 watt T5HO

D. Voltage

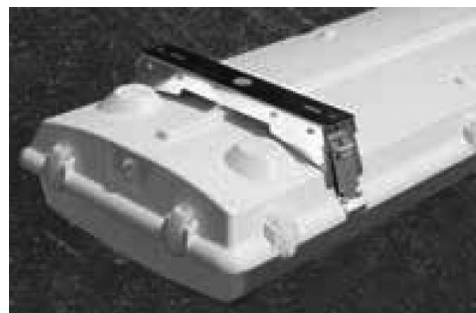
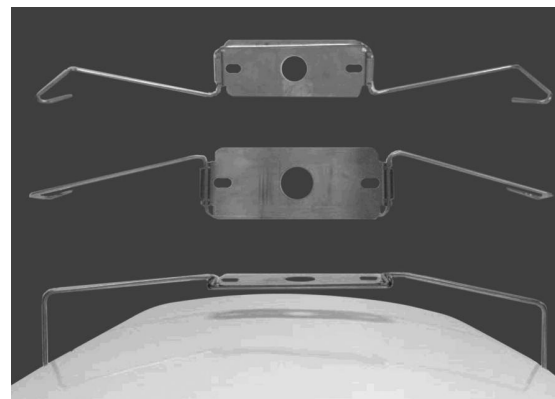
U = Universal Voltage – (120V – 277V)
48 = 480V
PS = Program Start T8 Ballast
HL = High Lumen T8 Ballast
CT = Cold Temperature T8 Ballast
UEN = Non-switching universal voltage emergency (T8 Only)
UENST = Universal voltage (120V – 277V) emergency self-testing (T5 Only)
EN12 = Non-switching 120V emergency (T5 Only)
EN27 = Non-switching 277V emergency (T5 Only)
ES12 = Switching 120V emergency (T5 Only)
ES27 = Switching 277V emergency (T5 Only)
EN48 = Non-switching 480V emergency

E. Options

R3 = 3 wire mini-receptacle – male
R4 = 4 wire mini-receptacle – male
S = Stainless steel latches
M = Mirror Reflectors
L41 = Non-coated 841 lamps
CL41 = Coated 841 lamps
P6 = STOW lead – 6'
G-CM1 = Ceiling mount bracket
G-SMB = Stainless steel mounting beam
MS = Motion sensor

Consult factory for all available options & configurations

Mounting Options



LIGHTING ETC.
INCORPORATED